



METHODOLOGY FOR SWIMMING POOL

1. SURFACE PREPARATION

The surface to be coated must be sound and clean, free of all traces of paints, coatings, efflorescence, loose particles, grease, oil, de-molding agents, dust, gypsum plaster, etc. Chisel all the unwanted / dead concrete and clean the entire surface by using wire brush.

2. CRACK FILLING

Filling Junctions with Polymer Modified Mortar using STARBOND STARCRETE

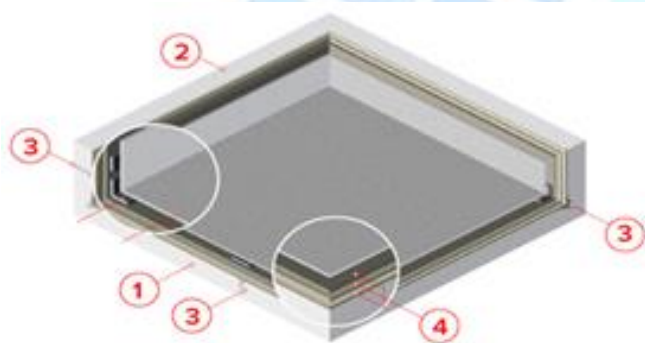
3. PRIME COAT

For priming, primer coat of WF MB 602 is applied on prepared surface. For primer coat use STARPROOF WF MB 602 diluted with water in ratio of 1:2.

4. COATING

After complete drying of the primer and bonded areas, Apply 2 coats of **STARPROOF WF MB 602** with brush, roller or spray gun. A brush with horse hair bristles will provide almost texture-free, smooth surfaces. Dilution up to 20% for 1st coat and 10% for 2nd coat is allowable. Each coat shall have an interval time of 6-8 hrs for curing. Second coat of WF MB 602 and broadcasting of sand in wet condition.

After then apply 1 coat of STARCEM 2K @ .8 kg per SQM. Finally apply screed plaster.



INDIA

Tel. +91 9712925770
Email: - info@ssplchem.com
www.star-uae.com

KSA

Tel. +996 12 677 7073
Email: - ksa@star-uae.com
www.star-uae.com

UAE

Tel. +971 6 5611411
Email: - uae@star-uae.com
www.star-uae.com